

Conceptually Chic



Workshop Inc. and KSA Design Planning Services Pvt Ltd, efficiently work in tandem to design the versatile 'Advanced Diabetes Centre' in Surat (Gujarat). This space brings into light an offbeat approach adopted by the designers to lend new dynamics to contemporary healthcare design.

TEXT: KANUPRIYA GARG,
WITH INPUTS FROM THE DESIGNERS
PHOTOGRAPHS: KUNAL BHATIA,
COURTESY THE DESIGNERS

Spread across 4,350 sq ft on the fourth floor of a building at a busy junction in Surat, the 'Advanced Diabetes Centre' (ADC) offers some of the best views of the city. The space provides a one-stop solution for the treatment and the prevention of diabetes with their state-of-the-art facilities and an experienced and qualified team of specialist doctors. Due to the nature of

diabetes, the patients are bound to come for routine check-ups and various tests through the course of their treatment, which may last for months or years together at a stretch. Considering this aspect, the designers wanted to create a vibrant and lively space by applying a mix of colours and different materials to offer a pleasant visual experience to the patients for their repeated

visits. 'The design of ADC is an attempt to break away from the clichés of a standard medical centre and fashion a warm and inviting space for the patients,' says Keta Shah of Workshop Inc. With a floor plate of 16m x 25m, it was challenging to get natural light to all the spaces. The consulting cabins have been placed towards the windows, and the spaces that require more

The glass partitions which extend into the cabins, help in visually opening up the narrow corridor.





'Patients spend a considerable amount of time at the waiting space during and before their tests. Various additional recreational amenities in this space such as books, TV and Internet help in keeping the patients entertained during the waiting period.'



Towards the left of the reception is a drugstore, flanked by a small ledge where the patients can have their meals during the tests.

privacy are placed along the other corridor. Natural light also streams through the cabins to the waiting and reception areas. In the common areas, bright colours like yellow and blue along with a warm material palette of wood and rusted metal are employed. Splashes of colour have been added to elements like the beams and columns to break the monotony of this space. The black kadappah flooring offers a striking contrast to the vibrant colours around. Elements like the perforated metal louvres, glass with information graphics and coloured MDF are used in the vertical partitions to provide transparency along with the required privacy.

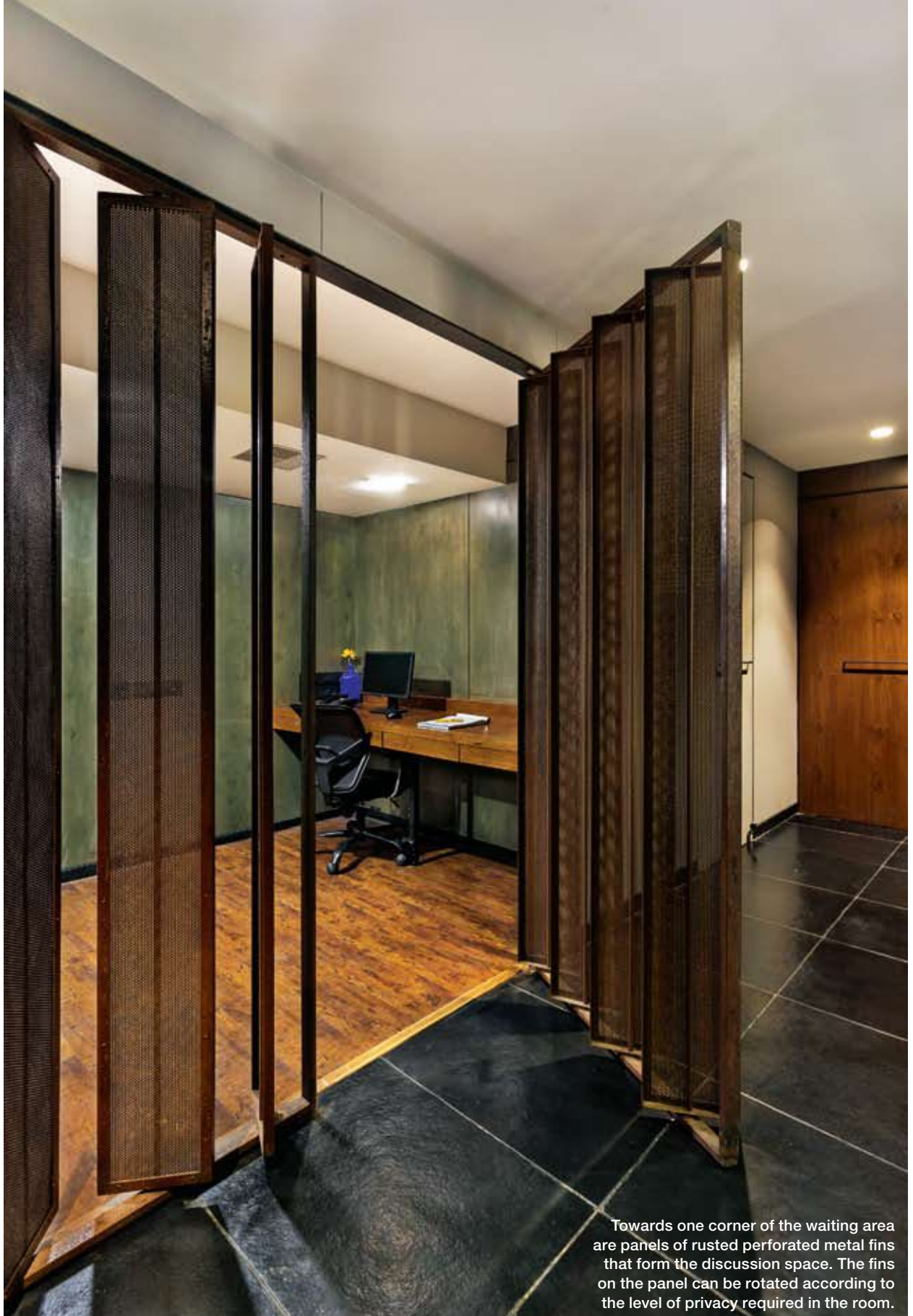
Bubbly hues of green and yellow, wooden flooring, glass partitions and white ceilings beautify the consulting cabins. Wooden flooring is used inside all the cabins and examination rooms.

A striking yellow beam guides the visitors through the entrance passage leading up to the reception, which in turn opens up into the central waiting area. The reception is decked in wood and metal along with a small installation made of reclaimed clock springs. Towards the left is a drugstore, flanked by a small ledge where the patients can have their meals during the tests.

The central waiting space forms the core of the ADC.

'Patients spend a considerable amount of time at the waiting space during and before their tests. Various additional recreational amenities in this space such as books, TV and the Internet kiosk help in keeping the patients entertained during the waiting period,' says Harsha Mistry of Workshop Inc.. The ceiling forms the defining element of this space. Simple yellow reflectors are suspended in a grid, making a loud, yet elegant statement. A café-style seating, rather than the standard row-based seating has been incorporated to allow interaction between the patients.

Towards one corner of the waiting area are panels of rusted perforated metal



Towards one corner of the waiting area are panels of rusted perforated metal fins that form the discussion space. The fins on the panel can be rotated according to the level of privacy required in the room.

'The design of ADC is an attempt to break away from the clichés of a standard medical centre and fashion a warm and inviting space for the patients.'

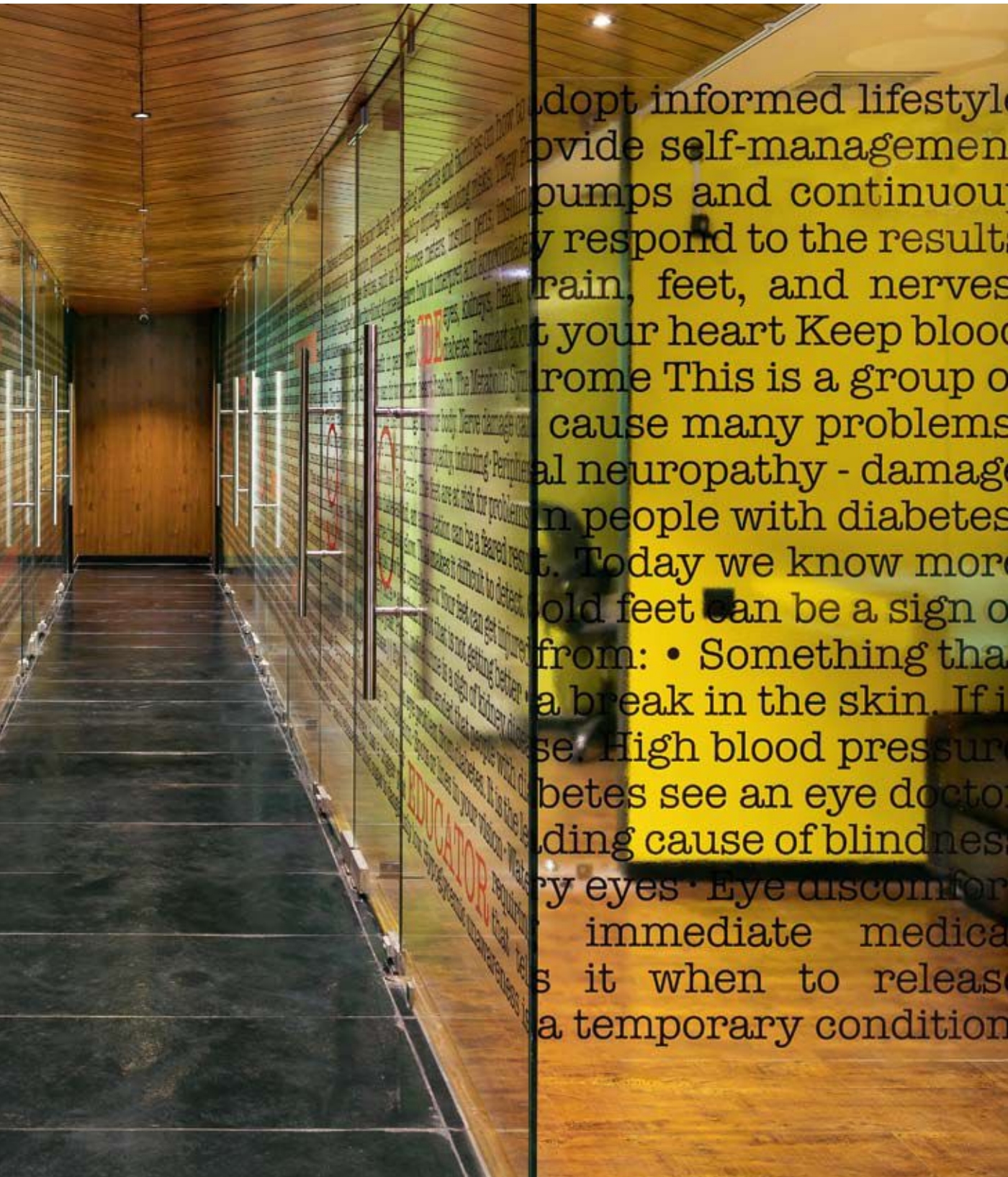


finns that form the discussion space. The fins on the panel can be rotated according to the level of privacy required in the room. The metal screen also encloses the physiotherapy room.

Blue, yellow and black-coloured MDF panels are used to 'soften' the corridor. Along the corridor, there is a testing laboratory, and rooms for general examination and feet check-up.

A second corridor leads up to the consulting cabins of the doctors. The glass partitions, which extend into the cabins, help in visually opening up this narrow corridor. A wooden ceiling, shades of yellow and green inside the cabins, and natural light streaming through the full glass partitions brighten up this space. Bold text on the partitions makes for an interesting element and also gives out some useful facts







In the common areas, bright colours like yellow and blue along with a warm material palette of wood and rusted metal are employed.



Samir Shah



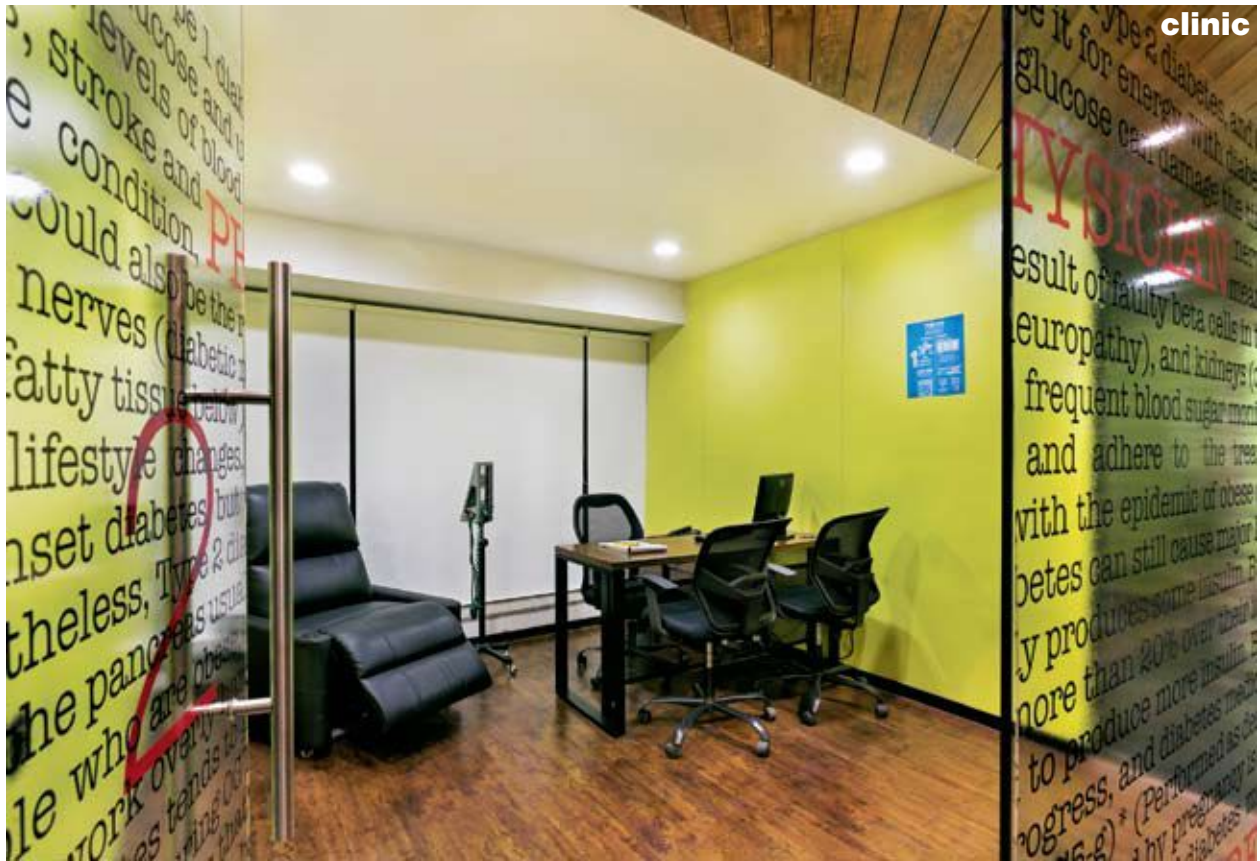
Keta Shah, Varun Shah and Harsha Mistry

FACT FILE

CLIENT
Advanced Diabetes Centre Pvt Ltd
LOCATION
Surat, Gujarat
COVERED AREA
4,350 sq ft

NAME OF THE FIRM
Workshop Inc and KSA DPS Pvt Ltd
PRINCIPAL DESIGNERS
Varun Shah, Harsha Mistry, Keta Shah
(Workshop Inc)
Samir Shah (KSA DPS)

TIME TAKEN FOR COMPLETION
4.5 months
YEAR OF COMPLETION
June 2015
INTERIOR CONTRACTOR
KBP Interiors, Ahmedabad



Bold text on the partitions in the consulting cabins of the doctors, makes for an interesting element and also gives out some useful facts and information on diabetes.



A striking yellow beam guides the visitors through the entrance passage leading up to the reception, which in turn opens up into the central waiting area.



and information regarding diabetes. There is a meeting and a conference/seminar room for the doctors here, which can be combined into one space by opening up the flexible glass partition.

By infusing artistic elements into a functional territory, the design team has

created a space, which can possibly ease the pain of the visiting patients with its cheerful ambience and recreational facilities. By redefining the interiors of a medical centre from dull and lifeless to creative and exciting, they have definitely set an example for others to follow! 